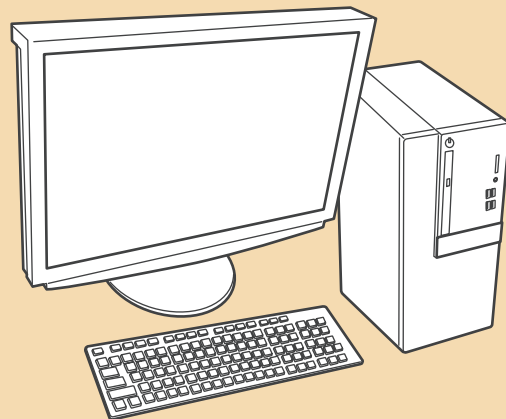
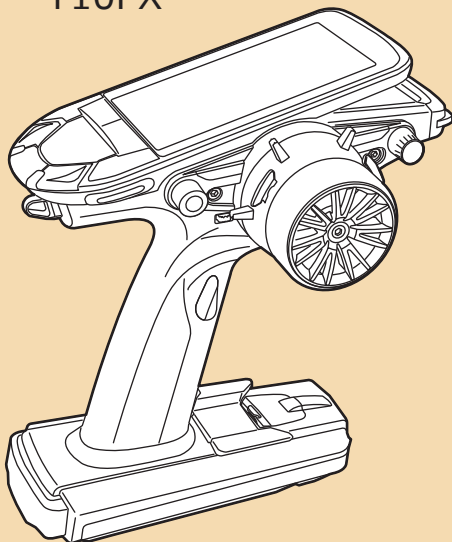


Your Futaba R404SBS/R404SBS-E programming can be updated easily online. When functions are improved, the update file can be downloaded from our website.

For more information, check out web site for FAQ regarding updating this product.

T10PX



PC that can connect to the Internet



Male-to-Male Extensions



microSD card

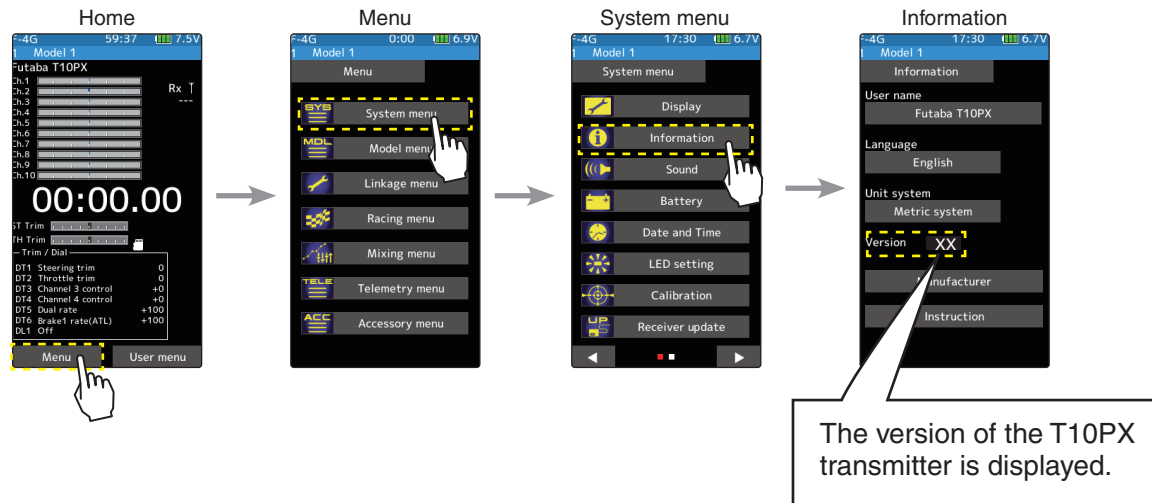
Diagram illustrating the connection of a Futaba receiver to a transmitter and a receiver battery.

The transmitter is a Futaba R4048S-E, and the receiver is a Futaba R4048S.

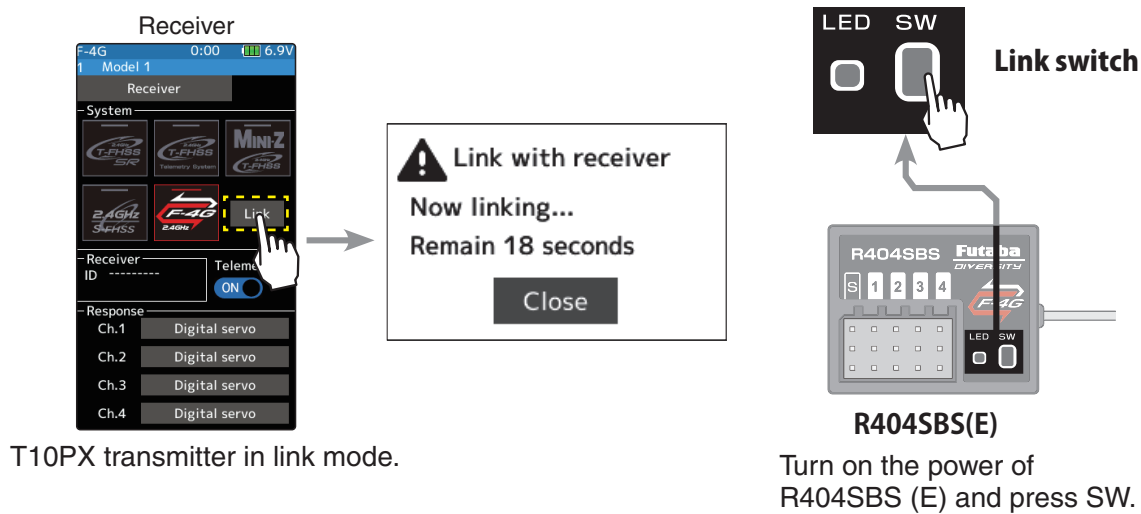
The receiver is connected to the transmitter via a cable labeled "CH1 ~ CH4" and "S (S.BUS)".

The receiver is also connected to a "Receiver battery 3.7 V-7.4 V" via a cable labeled "COM".

T10PX Version check



R404SBS(E) Version check



Receiver
ID xxxxxxxx
Version xx

The version of the R404SBS (E) receiver is displayed

When using the UR servo, make sure that it is Ver2.0.
Ver1.0 cannot be set wirelessly for UR servo, so upgrade to Ver2.0.

Updating procedure

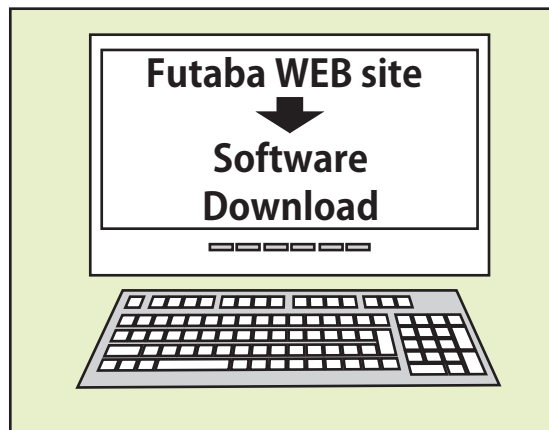
1. Download the zip file of the update data from our website or your local distributor's website.

<https://futabausa.com/>

2. Extract the zip file on your computer.

3. Insert the micro SD card into the PC and copy the FUTABA folder expanded on the PC to the micro SD card.

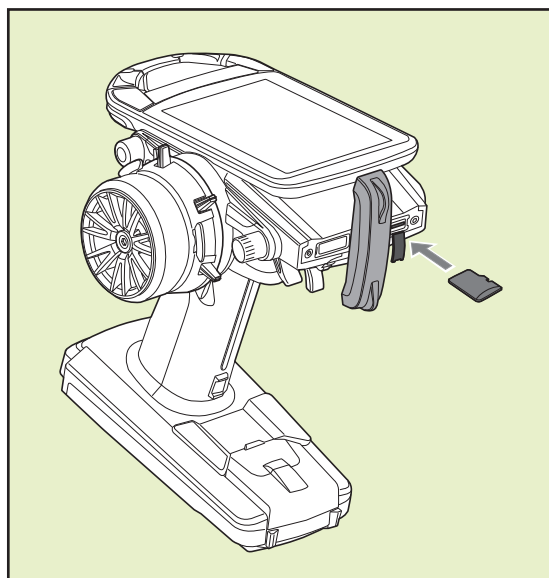
If you already have a microSD card FUTABA folder, overwrite it.



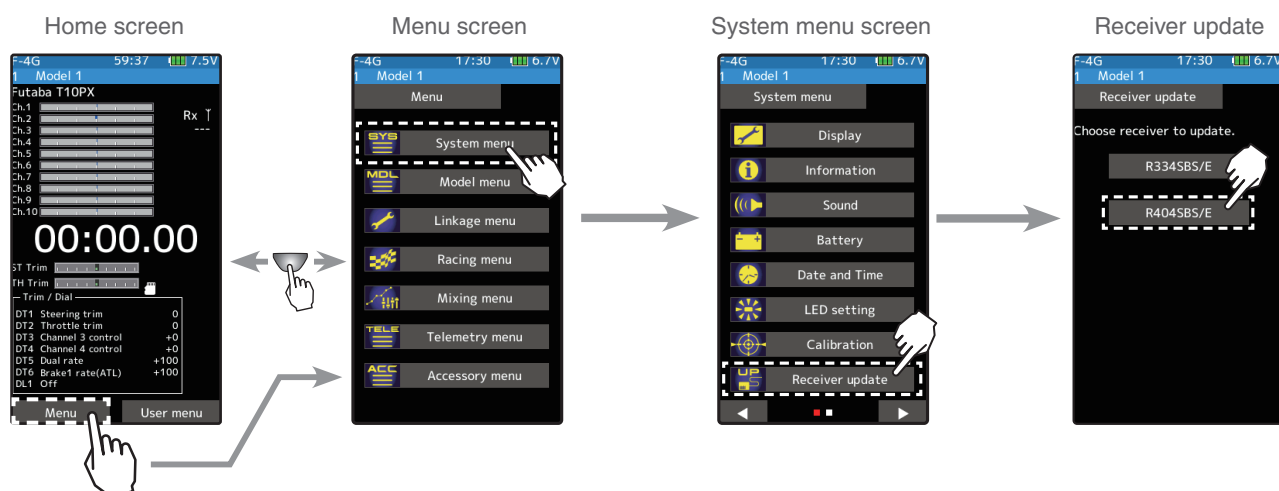
FUTABA



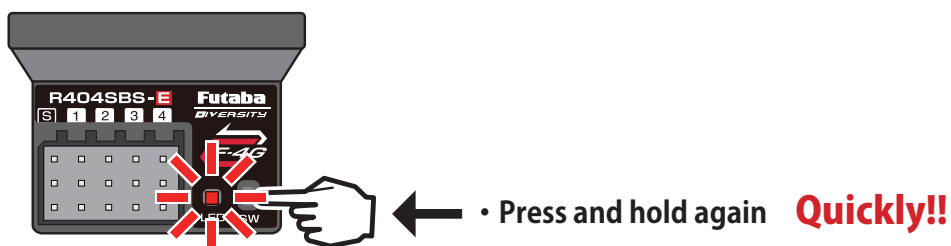
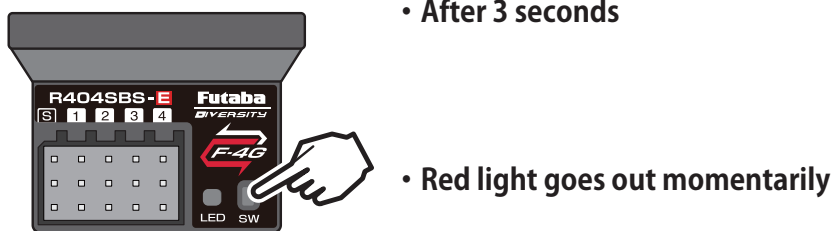
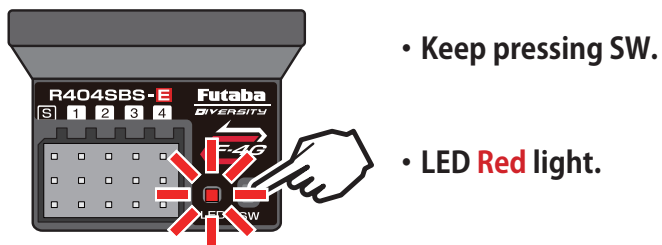
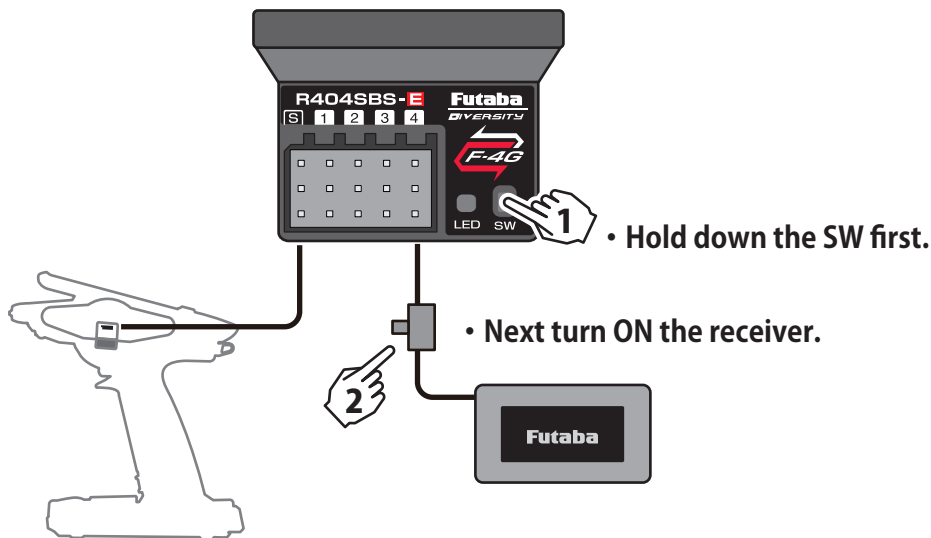
4. Insert the micro SD card with the copied FUTABA folder into the T10PX.



5. Turn on the DSP or PWR switch of T10PX and display the receiver update screen.



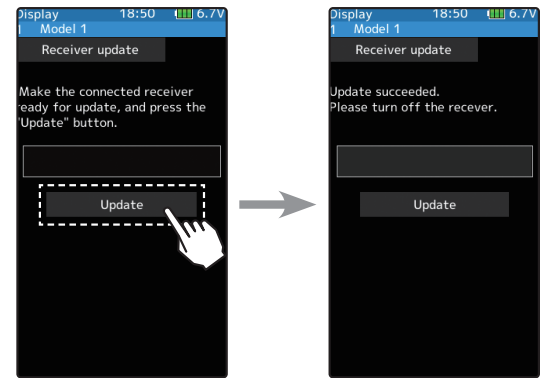
6. Put the receiver ready for update.



If the mode LED lights up green, it has failed. Please retry.

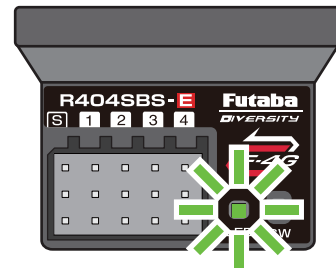
- 7.** Tap the "Update" button on the screen. The update will start. A progress bar will be displayed indicating the progress. The LED of the receiver turns green, and it blinks green for a moment every time it accepts data from the T10PX.

- Do not turn off the power of T10PX while updating.



- 8.** When the update is completed, a message is displayed on the screen, and the LED of the receiver stays flashing green. Please turn off the power of the receiver.

- Please check the operation before running.



- 9.** When finished, return to the System menu screen by pressing the HOME button.

Error

If an error display appeared, reinstall the update from the beginning.

- The receiver is not in the update wait state.
- The cable is disconnected.
- The power has been turned off
- The micro SD card is not inserted in the T10PX.
- There is no data on micro SD card.

Compatible with Wireless UR mode types setting function

Switching of UR type (UR1 / UR2 / UR3 / UR4) of UR servo can be set wirelessly (T10PX).

- * T10PX also needs to be upgraded to Ver.2.0 or later.
- * Switching from normal to UR / SR of UR servo can only be done by wire.
- * Refer to the T10PX manual for how to set the wireless parameters.

