

- ① X7 Swash plate set (Formula)
X7 十字盤組

- ② X7 Rotor head (Formula)
X7 主旋翼頭

- ③ X7 Main shaft (Formula)
X7 主軸

- ④ X7 Washout arm set (Formula)
X7 剪型臂組

- ⑤ X7 Pitch control linkage rod (Formula)
X7 主旋翼拉桿

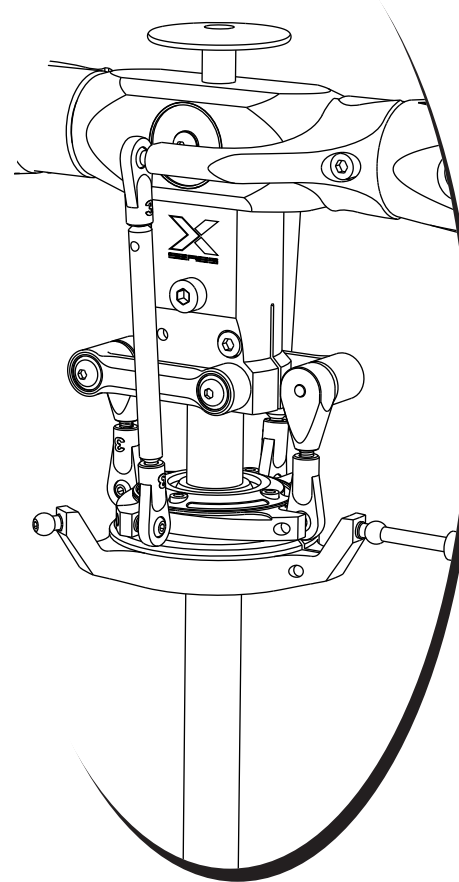
- ⑥ X7 parts (Formula)
X7 配件



GAUI

www.gauicom.tw
E-mail: gauicom@gauicom.tw
TEL: +886-2-86305567
FAX: +886-2-26105567
No.118, Ren'ai Rd., Bali Dist.,
New Taipei City 249, Taiwan

GAUI



Apply general thread lock.
To tight screw and apply thread lock.
一般型止鬆劑
鎖緊螺絲並確認上膠



Apply anaerobic adhesive.
Be certain to tight screw and
apply thread lock.
特殊型缺氧膠
務必鎖緊螺絲並確認上膠



Danger: High level of attention should be
taken during assembly.
Action during assembly might be hazardous.
Extreme care should be taken to avoid injury.
危險：組裝過程中請小心安裝並注意
此危險程度可能造成安全性漏洞
導致人為傷害。



Apply general thread lock.
Be certain to tight screw and
apply thread lock.
一般型止鬆劑
務必鎖緊螺絲並確認上膠



Apply lubricant
依個人需求使用潤滑油。

N-Nut N-螺母	N(Dia.out)x(Width) L-Lock nut N(外徑)x(長度)
W-Washer W-華司	W(Dia.in)xDia.outx(Thickness) W(內徑)x(外徑)x(厚度)
P-tube P-柱狀體	P(Dia.in)x(Dia.out)x(Length) P(內徑)x(外徑)x(長度)
B-Bearing B-軸承	B(Dia.in)x(Dia.out)x(Thickness) B(內徑)x(外徑)x(厚度)
M-Machine Screw M-公制螺絲	M(Dia.out)x(Length) M(外徑)x(長度)

Make sure to assemble the parts as shown in figure above.
Incomplete or incorrect assembly may cause control
failure during flight.

以上圖示，於組裝時請確實注意，避免組裝後試飛造成
失控零件鬆脫等情況發生。



We recommend downloading and using the
latest Manual from Official GAUI website's
download area.

我們建議您從GAUI官方網站的下載區，
下載並使用最新的手冊。

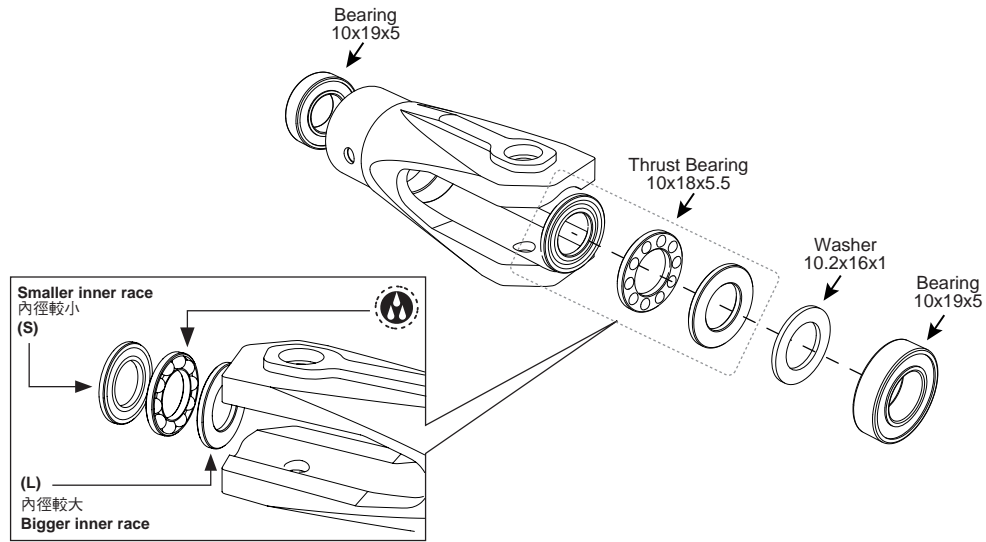
Website: www.gauicom.tw © 2012 MADE IN TAIWAN





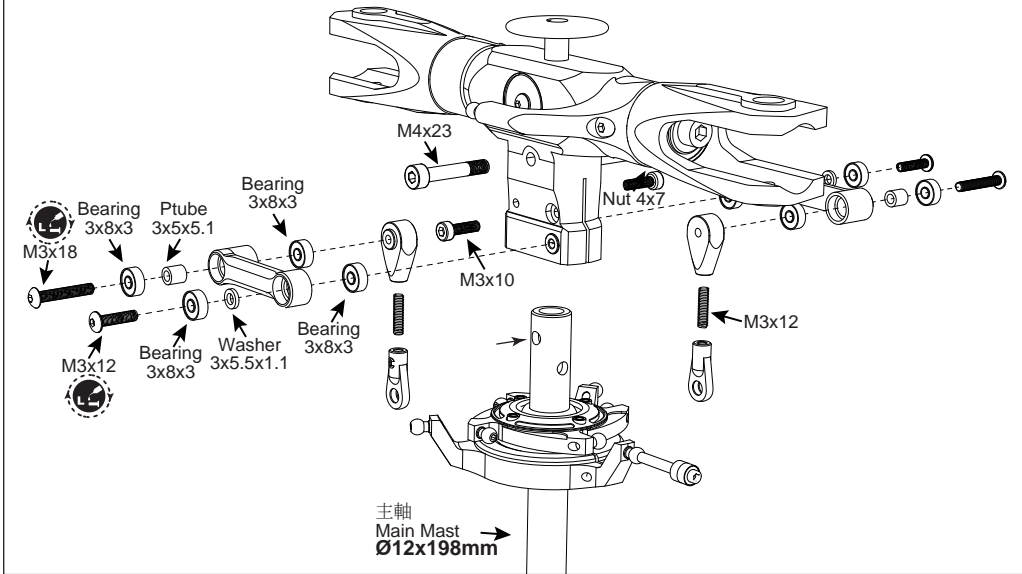
Main blade grip assembly

主旋翼夾頭組裝



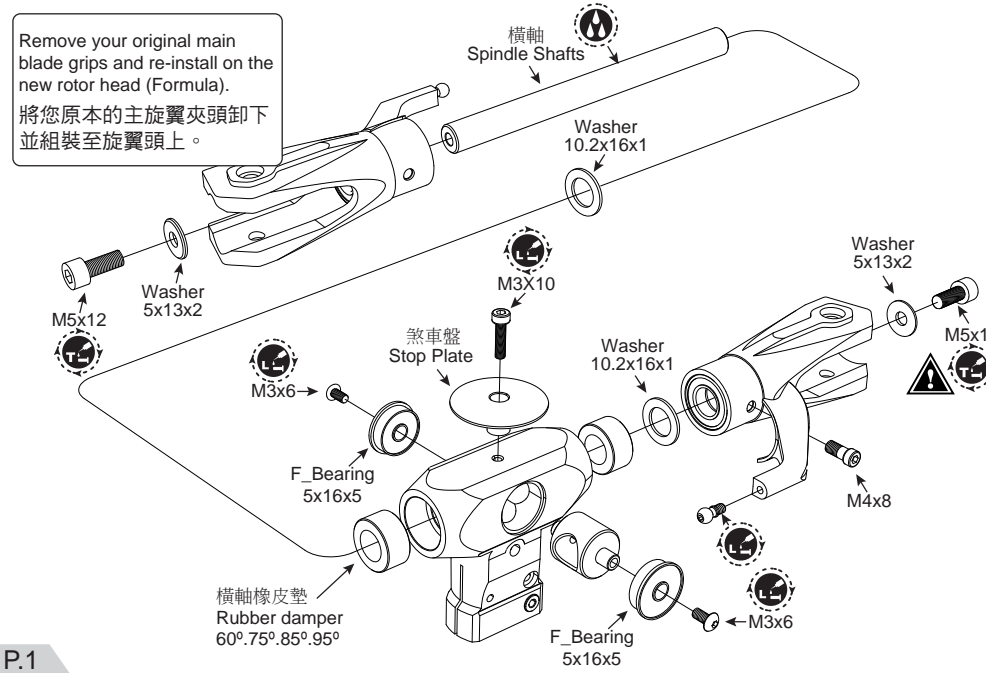
Washout arm assembly

剪型臂組裝



Main blade grips assembly

主旋翼夾頭組裝



Pitch control linkage rod assembly

主旋翼拉桿組裝

