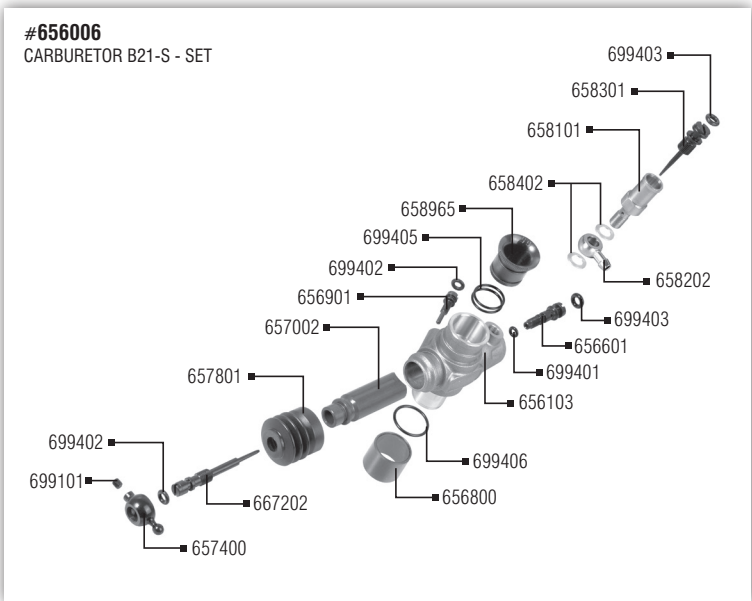
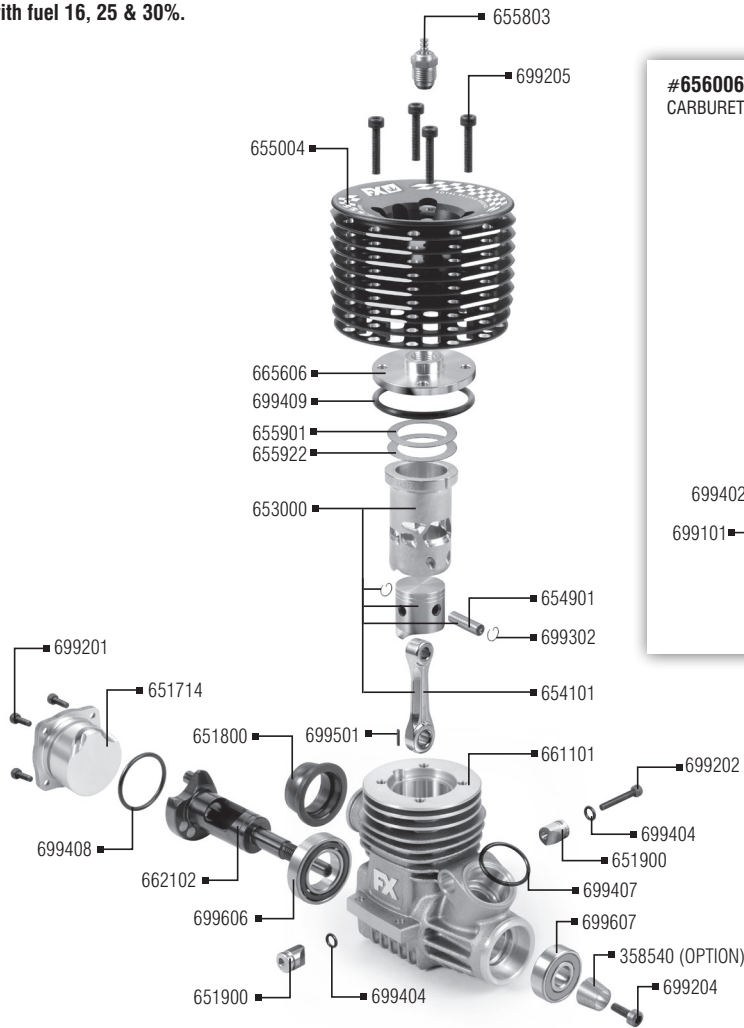


The K502 engine was designed to use with fuel 16, 25 & 30%.

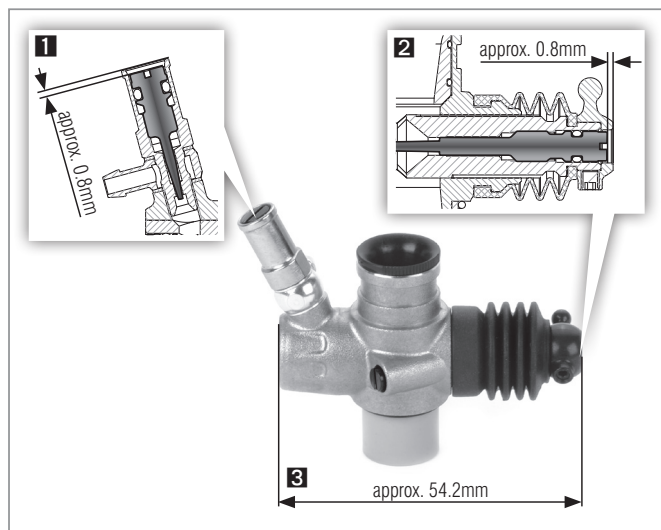


## CARBURETOR SETTINGS

### Factory carburetor setting for break-in procedure

The carburetor comes preset from factory and you have to start the break-in procedure with the following setting:

<b>1</b> Main High-speed Needle (Upper)	approx. 0.8mm inside the needle body
<b>2</b> Low-end Needle (Front)	approx. 0.8mm inside the needle body
<b>3</b> Idle Adjustment Screw	Size measured with carburetor boot compressed approx. 54.2mm



### Basic Carburetor Setting after break-in procedure

After you have finished the break-in procedure this is the basic carburetor setting. Any time you get lost return back to this basic setting.

<b>1</b> Main High-speed Needle (Upper)	approx. 0.8mm inside the needle body
<b>2</b> Low-end Needle (Front)	approx. 0.8mm inside the needle body
<b>3</b> Idle Adjustment Screw	Size measured with carburetor boot compressed approx. 53.2mm

