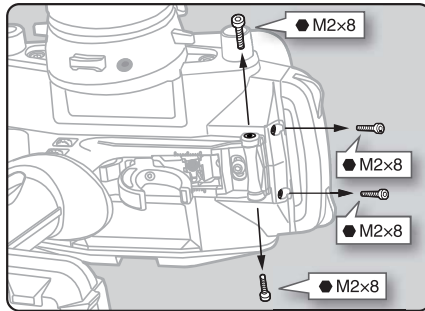


This spring is for changing the trigger tension of the T10PX. It is necessary to disassemble the trigger part for replacement. Be careful not to damage the electronic components or wiring when replacing. Do not work if you are not confident in the replacement work. Be careful not to lose parts or screws.

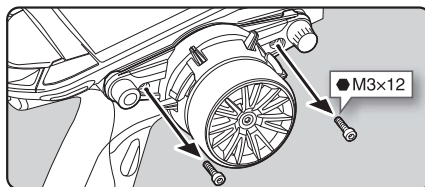
How to replace the spring

- 1** Remove the fixing screw shown in the figure with a hex wrench.

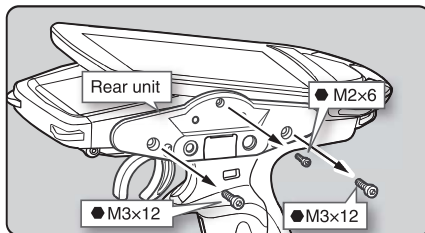
● Be careful not to lose the screws.



- 2** Remove the 2 steering unit mounting screws (M3x12 screw).

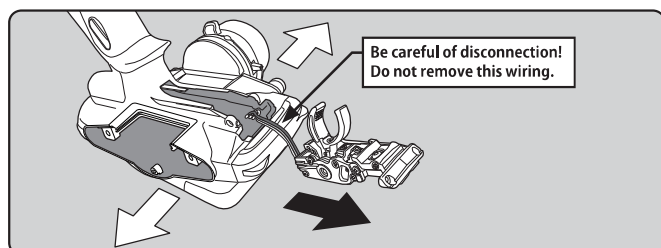
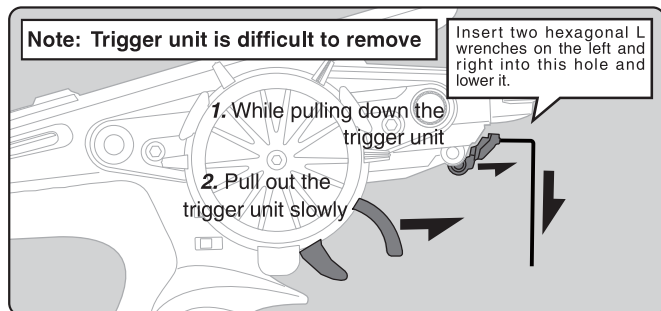


- 3** Next, remove the rear unit on the back side. With a hex wrench, remove the two M3x12 screws and one M2x6 screw on the opposite rear unit. The connector on the rear unit is still attached.

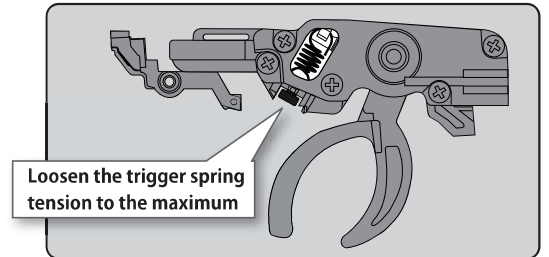


- 4** Pull out the trigger unit while pulling down it slightly as shown in the figure. Pull out the trigger unit in the direction of the black arrow while opening the case slightly in the direction of the white arrow.

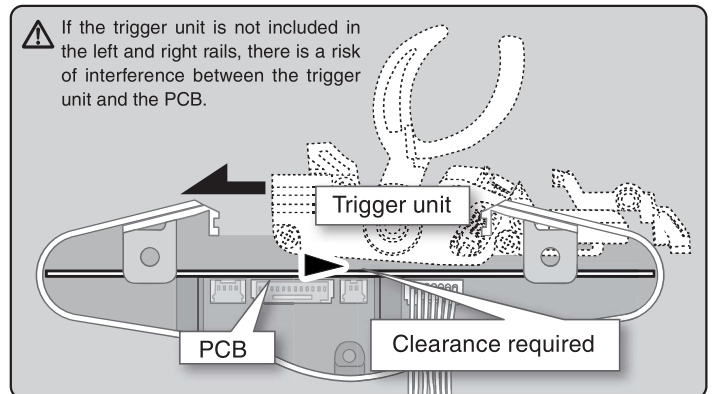
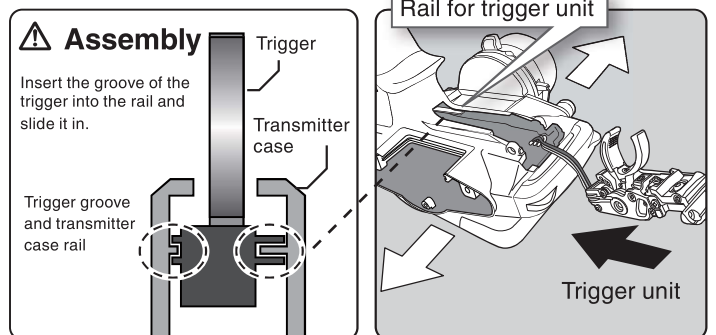
● Be careful not to cut the wiring.



- 5** Remove the trigger unit, there is a window at the spring. First, loosen the trigger spring tension to the maximum, remove the spring from the window with tweezers, etc., and replace it.



- 6** Assembling. Insert the trigger unit into the rail of the transmitter case as shown.



Look inside from the removed rear unit side and insert the trigger unit while checking the clearance between the PCB and the trigger unit. Be careful as the PCB and the trigger unit will be damaged if they interfere with each other.

- 7** Install and tighten all the screws.

- Be careful not to pinch the wiring.
- Be careful not to lose the springs and screws.
- Be careful not to overtighten the screws.

- 8** Calibrate the trigger from the System menu→Calibration.