

This software updates or alters the functions and features noted below. The instructions and information that follow are meant as a supplement to the original instruction manual that accompanied the transmitter. Please refer to the original instruction manual where applicable, but replace the steps indicated below with these instructions. Please check to ensure that the update has been installed.

- 1) Select the System Menu.
- 2) Touch the [Information] button.
- 3) Confirm that the information in the display indicates the version numbers as noted above.

## 1. Compatibility of model data created with T18SZ 70th anniversary model

It is necessary to update software to Ver.3.6 or later in order to use model data created with the T18SZ 70th anniversary model.

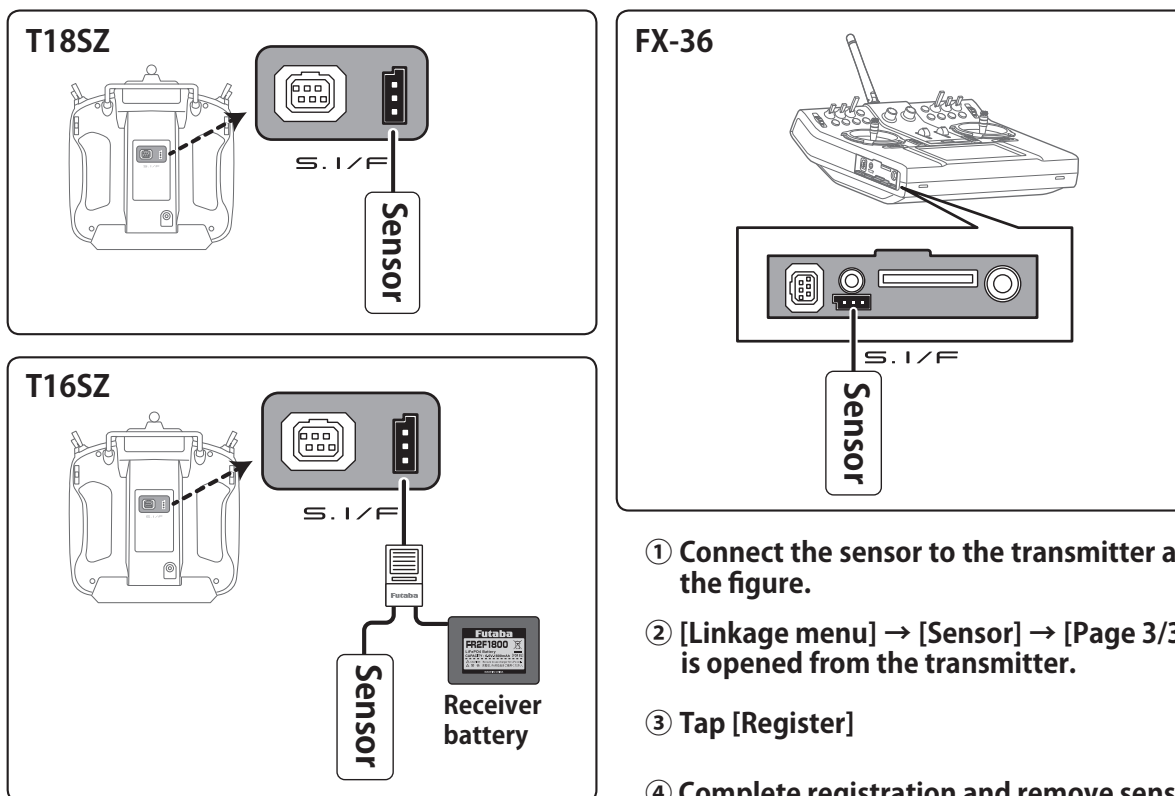
\* There are no difference in functions between the 70th anniversary model and standard model.

## 1. Telemetry Airspeed sensor function

The T18SZ/T16SZ/FX-36 has been made compatible with the telemetry airspeed sensor.

\*Airspeed sensor must be installed in the aircraft.

### ◆ Airspeed sensor is registered with the transmitter.

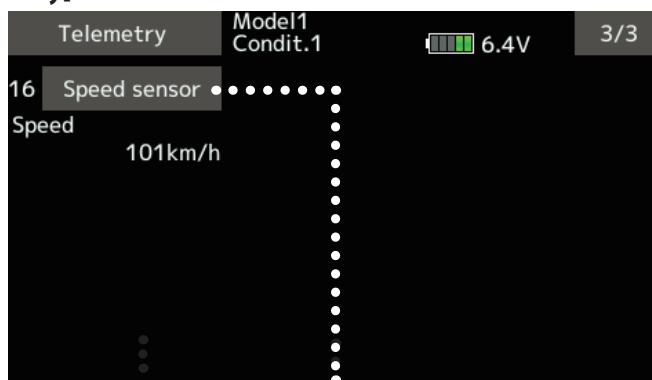


- ① Connect the sensor to the transmitter as shown in the figure.
- ② [Linkage menu] → [Sensor] → [Page 3/3] is opened from the transmitter.
- ③ Tap [Register]
- ④ Complete registration and remove sensor from the transmitter.

### ◆ How to display the Airspeed sensor screen.

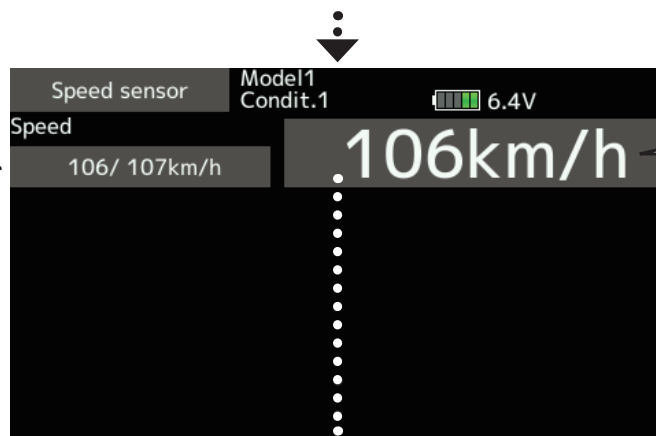
- ① [Linkage menu] → [Telemetry]

- ② Tap [Speed sensor]



## ◆ Speed sensor screen

Max. and min. values since the power was turned ON will display.



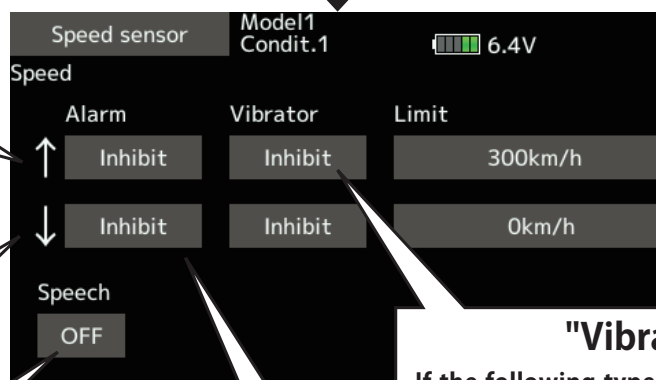
Airspeed

## ◆ Alarm setting

↑ An upward arrow indicates the alarm will sound when the speed reaches above your set value.

↓ A downward arrow indicates the alarm will sound when the speed reaches below your set value.

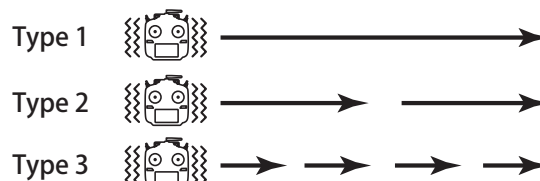
The ON/OFF switch of Speech is chosen.



A setup of the speed on which the alarm operates.

### "Vibrator" type

If the following types are selected, the transmitter will vibrate during the warning.

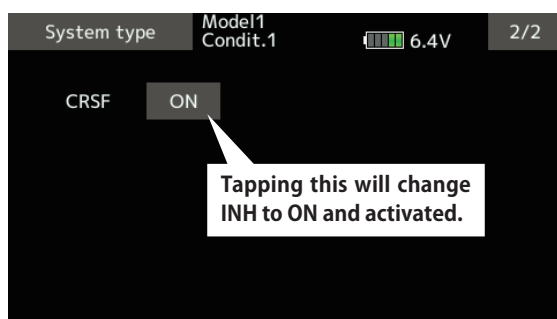


## 2. CRSF Protocol for TBS

The T18SZ/T16SZ/FX-36 has been made compatible with the CRSF (TBS) protocol.

- Bidirectional communication function of CRSF is not supported.

- ① [Linkage menu] → [System Type] → [Page 2/2] is opened from the transmitter.



Tapping this will change INH to ON and activated.

- ② Tap the "CRSF" button to [ON]. A signal conforming to the CRSF standard is output from the S.BUS setting connector (S.I/F) of the transmitter.

! Futaba is not responsible for damage sustained by combination with parts other than Futaba Genuine equipment.

- When using CRSF, the S.BUS servo setting function and [Reload] [Register] [Change slot] functions cannot be used. When setting S.BUS servo and sensor, set CRSF to INH.

This software updates or alters the functions and features noted below. The instructions and information that follow are meant as a supplement to the original instruction manual that accompanied the T18SZ/T16SZ/FX-36 transmitter. Please refer to the original instruction manual where applicable, but replace the steps indicated below with these instructions. Please check to ensure that the update has been installed.

- 1) Select the System Menu.
- 2) Touch the [Information] button.
- 3) Confirm that the information in the display indicates the version numbers as noted above.

## 1. Fixed defect

- ◆ Fixed a problem that the power switch may not operate when the timer alarm is set to [Constant] mode.
- ◆ Fixed a problem that the position of the stick switch is not displayed correctly on the AFR. (FX-36 only)
- ◆ Fixed a problem that the power switch may not operate depending on the position of the trim dial. (FX-36 only)

This software updates or alters the functions and features noted below. The instructions and information that follow are meant as a supplement to the original instruction manual that accompanied the T18SZ/T16SZ/FX-36 transmitter. Please refer to the original instruction manual where applicable, but replace the steps indicated below with these instructions. Please check to ensure that the update has been installed.

- 1) Select the System Menu.
- 2) Touch the [Information] button.
- 3) Confirm that the information in the display indicates the version numbers as noted above.

## 1. Change of the trainer connector power supply specification

The update enables the trainer connector to supply power to external equipment connected to the trainer connector, when turning on the power by pressing the power switch in the trainer student mode.

## 2. Telemetry sensor made by O.S.ENGINES MFG.

It corresponds to O.S. EM-100 flight controller(under development). For details, please refer to the instruction manual of EM-100.

\*The EM-100 is not handled at Futaba.

**!** Futaba is not responsible for damage sustained by combination with parts other than Futaba Genuine equipment.

**!** When connecting Futaba transmitters to the trainer code, do not operate the power switch on the student side transmitter and operate the power switch on the teacher side transmitter as before. The student side transmitter turns power automatically in conjunction with the teacher side.

## 3. Fixed defect

- ◆ The count value of the integration timer has been corrected.
- ◆ Fixed the behavior of Ailevator.
- ◆ Fixed a problem that seldom the power switch does not work.